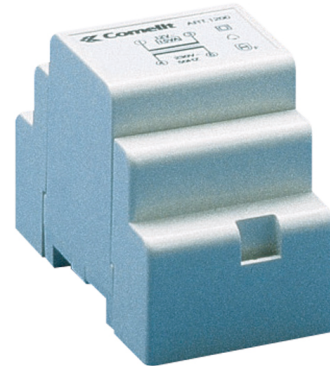


# DATA SHEET

## COD. 1200

### 12VAC TRANSFORMER WITH 230VAC INPUT

Transformer with 230V primary winding, 12V AC / 900 mA secondary winding for continuous use. Dimensions: 53x95x65 mm (3 DIN modules).



#### Compatibility

Simplebus Top system:	Yes
Simplebus Color system:	Yes
Simplebus 2 system:	Yes
Traditional system:	Yes
Simplified system:	Yes
Comelbus system:	Yes
Comtel system:	Yes

#### Mounting/Installation

Wall-mounted:	Yes
Surface-mounted:	Yes
DIN rail mounted:	Yes
DIN modules (no.):	3

#### Audio/video specifications

Audio system:	Yes
Audio/video system:	Yes

#### Connectivity

Stabilised output:	No
--------------------	----

#### Technical properties

Temperature range:	0 / 40
--------------------	--------

#### Electrical specifications

AC supply voltage:	230 V
--------------------	-------

The technical specifications are subject to variations without warning

# DATA SHEET

Switching power supply:	No
Alternating voltage output A (V):	12
Maximum power delivered:	15 VA

## General info

EAN product code:	8023903001334
Product height (mm):	95
Product width (mm):	53
Product depth (mm):	65

## Packaging

Single pack height (mm):	75
Single pack width (mm):	87
Single pack weight (g):	0,4
Single pack depth (mm):	100